



# Oud Poelgeest

KASTEEL CONGRESHOTEL



## Are you looking for a pleasant place to hold a meeting?

Are you looking for a special yet easily accessible location for a meeting, a training course or a conference lasting one day or several days? If so, Oud Poelgeest Castle in Oegstgeest is an excellent choice.

Oud Poelgeest Castle is situated in a beautiful country estate, a green oasis nestling unexpectedly among the Netherlands' main cities. There are 14 rooms spread over the castle and the coach house, each with its own particular atmosphere. Whether you wish to accommodate 2 or 100 people, there is almost always a room to suit your needs.

In this inspiring and historical setting, the warmest of welcomes awaits you. Whether you opt for an extensive buffet lunch or a three-course dinner, our kitchen staff will serve you a delicious meal using only the freshest ingredients. If you would you like to stay the night, we have 45 well-appointed hotel rooms with a wonderful view of our orchard or castle gardens.

Oud Poelgeest Castle is easy to reach. It is only 5 minutes from the A4 motorway between The Hague and Amsterdam, 20 minutes from Schiphol Airport and 10 minutes by bicycle from Leiden Central Station. Free parking is available on the grounds.

It may interest you to know that your visit will help us maintain a piece of Dutch cultural heritage. It enables us to continue our ongoing efforts to restore and preserve the listed buildings on the Oud Poelgeest estate, and to enhance their aesthetic qualities. Thanks in no small part to you and our other guests, the grand old buildings of yesteryear can look forward to a new and dynamic future.

Please find enclosed a list of our rooms and packages.

We look forward to welcoming you to Oud Poelgeest Castle!

**Oud Poelgeest**  
Castle and Conference Hotel

Poelgeesterweg 1  
2341 NM Oegstgeest

PO Box 1145  
2340 BC Oegstgeest

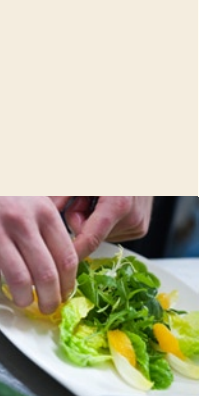
T + 31 (0)71 5174224  
F + 31 (0)71 5156478  
E [receptie@oudpoelgeest.nl](mailto:receptie@oudpoelgeest.nl)





# Oud Poelgeest

KASTEEL CONGRESHOTEL



## ONE-DAY PACKAGES

	PRICE PER PERSON
8-hour package (1 lunch, 2 coffee breaks)	€ 47.50
12-hour package (1 lunch, 1 dinner, 2 coffee breaks)	€ 87.00
12-hour package (1 lunch, 1 dinner, 3 coffee breaks)	€ 96.50

## MULTI-DAY PACKAGES

	LUNCH	DINNER	OVERNIGHT STAY	COFFEE	BREAKFAST	PRICE PER PERSON
24-hour*	1	1	1	3	1	€ 188.50
2-day	2	1	1	5	1	€ 230.00
3-day	3	2	2	8	2	€ 418.50
4-day	4	3	3	11	3	€ 607.00
5-day	5	4	4	14	4	€ 795.50

\*starting from approx 18.00

The packages include an extensive warm/cold buffet lunch and a three-course dinner (including ice water and coffee) and unlimited coffee/tea/biscuits/mints and ice water during the sessions in the main hall.

The multi-day packages also include an overnight stay with buffet breakfast on the basis of single rooms with shower, toilet, hairdryer, telephone, television and wireless internet.

We are fully equipped to deal with your dietary preferences. On request, we will be happy to suggest an alternative to our menu of the day. If you decide to have a late dinner, we can serve a snack with drink at around 17.00 from €7.20 per person.

We will be happy to provide you with a special estimate for multi-day packages with arrival and departure times outside our standard hours (9.00 - 17.00).

All prices are excluding VAT.



accommodation



# Oud Poelgeest

KASTEEL CONGRESHOTEL



# equipment/services

## EQUIPMENT / SERVICE

## PRICE

### ALL ROOMS

Flip chart	Free, supplied as standard
Items for meetings (markers, sticky tape, etc.)	Free, supplied as standard
Note pad and pen	Free, supplied as standard
Extra flip chart	€ 7.00 per day
Camera	€ 125.00 per day
DVD player	€ 25.00 per day
Monitor	€ 25.00 per day
Sound system with microphones	€ 35.00 per day
Extra lapel microphone	€ 25.00 per day
CD player	€ 17.50 per day
Projector	€ 75.00 for the first day € 50.00 for subsequent days
Laptop	€ 75.00 for the first day € 50.00 for subsequent days
Other equipment	Price on request
Photocopying	€ 0.10 per copy
Internet / e-mail	Free access in the internet corners. Free WIFI in all rooms.

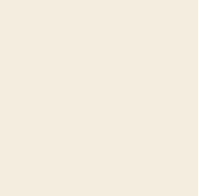
All prices are excluding VAT.





# Oud Poelgeest

KASTEEL CONGRESHOTEL



ROOM	CAPACITY	SURFACE AREA (indication)	PRICE PER DAY (with meeting package)
<b>CASTLE - ground floor</b>			
Zuidzaal	28 people	70 m <sup>2</sup>	€ 325.00
Drakenzaal	24 people	65 m <sup>2</sup>	€ 325.00
Leeuwerikkamer	12 people	35 m <sup>2</sup>	€ 175.00
Vijverzichtkamer	12 people	35 m <sup>2</sup>	€ 175.00
<b>CASTLE - 1st floor</b>			
Wapenzaal	28 people	70 m <sup>2</sup>	€ 225.00
Van Alkemadezaal	24 people	65 m <sup>2</sup>	€ 175.00
Kemenadekamer	12 people	35 m <sup>2</sup>	€ 175.00
Willinkkamer	12 people	35 m <sup>2</sup>	€ 175.00
<b>CASTLE - basement</b>			
Bar/terrace	60 people	65 m <sup>2</sup>	-
Proeflokaal bar	18 people	35 m <sup>2</sup>	€ 125.00
Oude Mangelkamer	12 people	25 m <sup>2</sup>	€ 125.00
<b>COACH HOUSE</b>			
Boerhaavezaal	40/100 people (depending on seating arrangement)	110m <sup>2</sup>	€ 425.00
Linnaeuszaal	18 people	43 m <sup>2</sup>	€ 175.00
Florazaal	14 people	43 m <sup>2</sup>	€ 125.00
Dianazaal	14 people	43 m <sup>2</sup>	€ 125.00
Faunazaal	12 people	40 m <sup>2</sup>	€ 125.00

Room rates without meeting package available on request.

# rooms

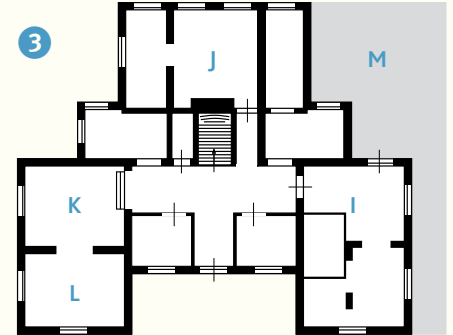
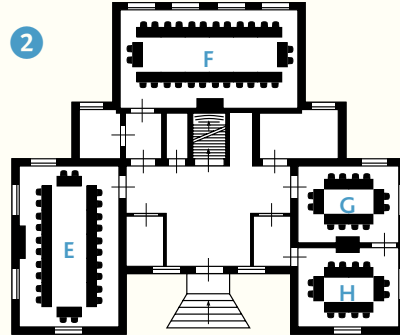
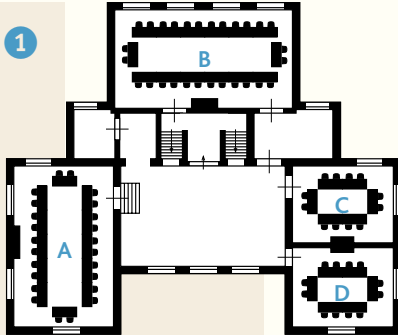
All prices are excluding VAT.





# Oud Poelgeest

KASTEEL CONGRESHOTEL



## ROOM

## DIMENSIONS

## CAPACITY

(indication)

### 1 CASTLE • FIRST FLOOR

A	Van Alkemadezaal	10.00 x 6.50m	24 people (U-shape or rectangular seating)
B	Wapenzaal	10.00 x 7.00m	28 people (U-shape or rectangular seating)
C	Willinkkamer	5.00 x 6.50m	12 people
D	Kemenadekamer	5.00 x 6.50m	12 people

### 2 CASTLE • GROUND FLOOR

E	Drakenzaal	10.00 x 6.50m	24 people (U-shape or rectangular seating) 50 people (seated in rows)
F	Zuidzaal	10.00 x 7.00m	28 people (U-shape or rectangular seating) 50 people (seated in rows)
G	Vijverzichtkamer	5.00 x 6.50m	12 people
H	Leeuwerikkamer	5.00 x 6.50m	12 people

### 3 CASTLE • BASEMENT

I	Bar	10.00 x 6.50m	60 people
J	Oude Mangelkamer	5.00 x 5.00m	12 people
K	Proeflokaal	5.00 x 6.50m	18 people
L	Wine cellar	5.00 x 6.50m	-
M	Terrace	9.00 x 6.00m	60 people (indication)

room capacity

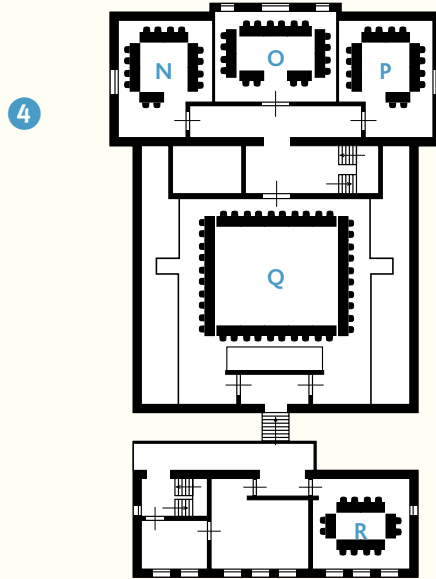
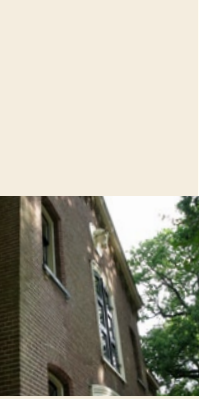
All prices are excluding VAT.





# Oud Poelgeest

KASTEEL CONGRESHOTEL



ROOM	DIMENSIONS	CAPACITY (indication)
<b>4</b> <b>KOETSHUIS • FIRST FLOOR</b>		
N Florazaal	6.00 x 8.00m	14 people
O Linnaeuszaal	6.50 x 8.00m	18 people (U-shape or rectangular seating)
P Dianazaal	6.00 x 8.00m	14 people
Q Boerhaavezaal	11.00 x 11.00m	100 people (seated in rows) 40 people (U-shape or rectangular seating)
R Faunazaal	6.00 x 7.00m	12 people

The Boerhaavezaal has a film screen and a sound system.

<b>5</b> <b>KOETSHUIS • GROUND FLOOR</b>		
Restaurant	18.00 x 8.00m	100 people
Petit	7.00 x 7.00m	25 people

All prices are excluding VAT.



room capacity